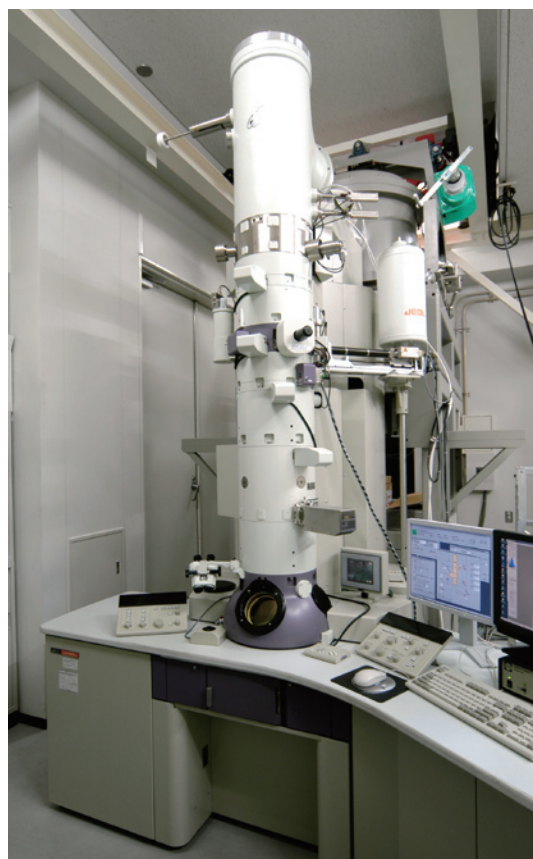


The Center has a number of instruments and cutting-edge facilities operated by many expert technical staff to effectively support the full characterization of new materials, evaluation of novel properties, and nanofabrications. It fully supports education, research and safety management.

In addition to analysis and evaluation of new materials, we focus on design and synthesis of new functional materials which might be essential in the areas of modern science and advanced technology, including nanotechnology, biological sciences, information technology, and the environment.

This is efficiently achieved by close collaboration between the main and collaborative laboratories at the frontiers of materials science. The Center also has a commission test scheme for non-NAIST researchers who wish to use our analytical facilities.



Graduate School of Materials Science



Facilities and Equipment

- | | | |
|---|---|---|
| <ul style="list-style-type: none"> • TEM • FIB • FE-SEM • SPM/AMF • XPS / AES • SIMS • NMR | <ul style="list-style-type: none"> • XRD • Micro-RAMAN • ICP • MASS • CD • Fluorescent lifetime • MIP-MASS | <ul style="list-style-type: none"> • Maintenance • User Training • Safety Management • Technical Support • Requested Measure / Commissioned Test |
|---|---|---|



Research and Education Center for Materials Science

Structure Science of Nano-Materials

Syntheses of New Function Materials

Design of Functional Materials



Students of various majors

