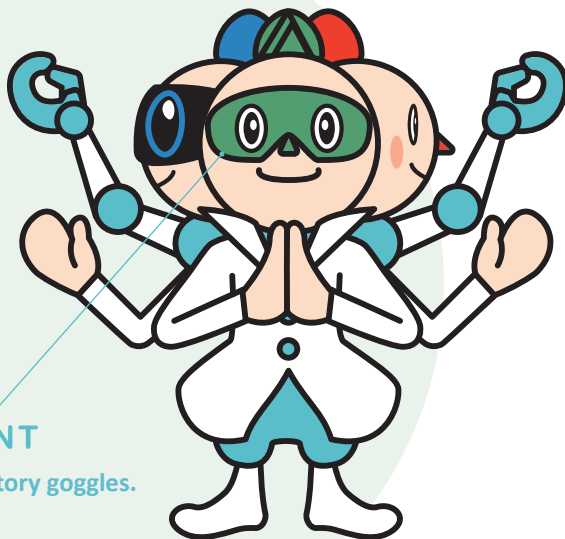
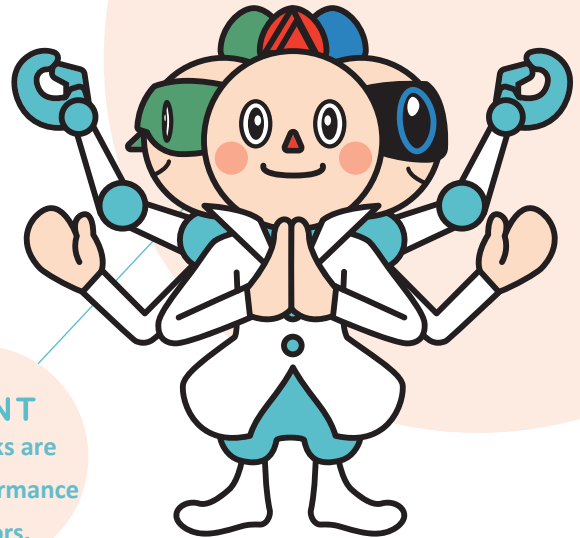


NASURA PROFILE

Origin of the name

NASURA is a combination of "Nara" (Prefecture) and "Asura," a superhuman or god found in Hindu and Buddhist mythology.



Date of birth

October 1st

Place of birth

Takayama-cho,
Ikoma city,
Nara prefecture

Special skills

- Undertaking difficult challenges
- Research
- Student support

Personality

Strong points

full of curiosity and a spirit of challenge, highly motivated and hardworking

Weak points

a busybody, meddles in others affairs

Division of Biological science

Profile

- A god who rules over the cutting edge of science.
- Each of the three faces has its own intention and opinion, and is good in one of the three areas of information, biological, and materials sciences. The front face changes according to the situation.
- NASURA's hair style which consists of three colors (red, green and blue) represents the 3 mountains of Yamato in Nara, and is also modeled after the NAIST logo.
- NASURA's attractive outfit is a fusion of a lab coat and a Buddhist monk's robes and its sky-blue color is based on the NAIST flag.
- When talking, NASURA often adds "sura" to the end of phrases.

Division of Materials science

